

Tromba I.
in Do

Verlaine-Suite

I. Introduction.

Lento molto. (♩=60)

Ⓐ

Pauline Hall (1929)

12 13

II. Nocturne Parisien.

Lento molto.

Largamente.

2 2 3 ff

Ⓑ Tempo I. ♩ = 56 Ⓒ Ⓓ

9 3 4 4 6 4 12 6 12 2 3/4

Ⓔ ♩ = ♩. rit. - - - Allegretto scherzando.

34 VI. I. p mf con sord.

Ⓕ

40 f senza sord.

Ⓖ rit.

52 mf f

59 **H** a tempo molto rit. - - - - -

mf *mf* *ff* con sord.

65 meno rit. - - - - - Tempo I. **I**

con sord. *pp* senza sord.

80 crescendo **K** Largamente.

Cor. II.IV. senza sord. *ff* *ff*

87 **L** Tempo I.

p *ff*

III. Ariettes oubliées.

Lento. poco rit. **N** a tempo **O**

10 **M** 7 7

27 Cor. I. **P**

p espr. 4 4

L'istesso tempo.

poco accel.

Ⓚ

40 VI. I.

Largamente.

Ⓜ Quasi Allegretto.

51

ritmo ben marcato

rit. - - - Ⓢ Quasi Allegretto.

63

rit. - - - Ⓣ Tempo I.

75

allargando

in tempo

Lento molto.

84

IV. Foire.

Quasi Allegretto.

5

poco a poco crescendo

Ⓤ

9

Trba. I.

17 *senza sord.* f V

24 f

32 *accelerando* W *ritard.* **Tempo I.** *con sord.* ff

49 *p* *senza sord.* X **Fl. I.II.** *senza sord.* f

66 Y **Tempo di Valse pesante. (Tung valsetakt)** p f p f

81 Z f

95 *molto rit.* ff ff **JF**

Tromba II.
in Do

Verlaine-Suite

I. Introduction.

Lento molto. (♩ = 60)

Ⓐ

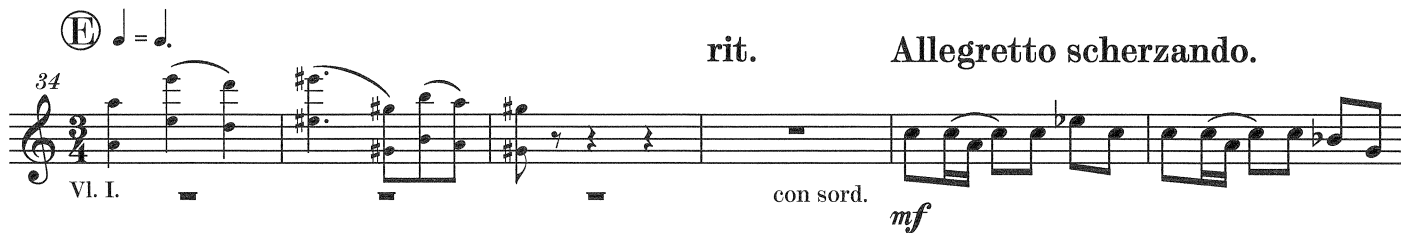
Pauline Hall (1929)



II. Nocturne Parisien.

Lento molto.

Largamente. Ⓑ Tempo I. ♩ = 56



52 senza sord. (G) rit. - - -

mf *f*

(H) a tempo molto rit. - - - - meno rit. - -

59

mf *ff* con sord.

Tempo I. (I) crescendo

67 con sord. 5 5 3

pp senza sord.

(K) Largamente.

83 Cor. II.IV. senza sord.

ff *ff*

(L) Tempo I.

87

p *ff*

III. Ariettes oubliées.

Lento. (M) poco rit. (N) a tempo (O)

10 7 7

L'istesso tempo.

27 **P** 9 4 VI. I.

42 poco accel. **Q** 6 3 Largamente. *fff*

R Quasi Allegretto. ritmo ben marcato rit. - **S** Quasi Allegretto.

55 2 6 2 2 9

76 rit. **T** Tempo I. Trba. I. 3 *mf* *f*

84 allargando in tempo Lento molto. 6 8 *ff*

IV.
Foire.

Quasi Allegretto. poco a poco crescendo

con sord. 8 Trba. I. con sord. **U** 4 senza sord. *f*

17 **4** **(V)**
 senza sord. *f*

25 *f*

31 **6** **4** **accelerando**

(W) ritard. **Tempo I.** **(X)**
 45 **9** **10** Trba. I. *ff*

(Y) **Tempo di Valse pesante. (Tung valsetakt)**
 68 **7** **6**
f *p < f* *f <*

(Z)
 87 *f* *ff*

96 **molto rit.** *ff*

Tromba III.
in Do

Verlaine-Suite

I. Introduction.

Lento molto. (♩ = 60)

Ⓐ

Pauline Hall (1929)

Musical notation for the Introduction section, measures 1-13. The staff is in treble clef with a 6/8 time signature. Measure numbers 12 and 13 are indicated above the staff.

II. Nocturne Parisien.

Lento molto.

Largamente. Ⓑ Tempo I. ♩ = 56

Musical notation for the Nocturne Parisien section, measures 1-11. The staff is in treble clef with a 3/4 time signature. Measure numbers 2, 12, 6, and 3 are indicated above the staff.

Musical notation for the Nocturne Parisien section, measures 12-21. The staff is in treble clef with a 3/4 time signature. Measure numbers 4, 4, 6, 4, 12, 6, 12, and 2 are indicated above the staff. Circled letters C and D are placed above measures 13 and 15 respectively.

Musical notation for the Nocturne Parisien section, measures 22-33. The staff is in treble clef with a 3/4 time signature. Measure number 34 is indicated above the staff. Circled letter E is placed above measure 22. Performance instructions include *rit.*, *con sord.*, and *mf*. Instrumentation includes VI. I. and Trba. I.

Musical notation for the Nocturne Parisien section, measures 34-43. The staff is in treble clef with a 3/4 time signature. Measure number 40 is indicated above the staff. Circled letter F is placed above measure 37. Performance instructions include *senza sord.* and *mf*.

Musical notation for the Nocturne Parisien section, measures 44-55. The staff is in treble clef with a 3/4 time signature. Measure number 56 is indicated above the staff. Circled letters G and H are placed above measures 44 and 45 respectively. Performance instructions include *rit.*, *a tempo*, *molto rit.*, *meno rit.*, and *Tempo I.*

Trba. III.

74 **I** **crescendo** **K** **Largamente.**

L **Tempo I.**

87

III.
Ariettes oubliées.

Lento. **M** **N** **O**

P **L'istesso tempo. poco accel.** **Q** **Largamente.**

36

R **Quasi Allegretto. rit.** **S** **Quasi Allegretto. rit.**

57

T **Tempo I.** **allargando** **in tempo** **Lento molto.**

79

IV.
Foire.

Quasi Allegretto. **U** **V** **W** **ritard.** **Tempo I.**

X **Y** **Tempo di Valse pesante. (Tung valsetakt)** **Z** **accelerando** **molto rit.**

55

Trombone I.

Verlaine-Suite

I. Introduction.

Lento molto. (♩ = 60)

Pauline Hall (1929)

Musical notation for the Introduction section, measures 12 and 13. The notation is on a single staff in 6/8 time. Measure 12 is marked with a circled 'A' and measure 13 is marked with a circled 'B'. The music consists of a single note in each measure.

II. Nocturne Parisien.

Lento molto.

Largamente. (♩ = 56)

Musical notation for the beginning of Nocturne Parisien, measures 1-5. The notation is on a single staff in bass clef. Measure 1 is 9/4, measure 2 is 12/4, measure 3 is 6/4, measure 4 is a whole rest, and measure 5 is 3/4. The music consists of a single note in each measure.

Musical notation for Nocturne Parisien, measures 16-20. Measure 16 is marked with a circled 'C' and measure 17 with a circled 'D'. The notation is on a single staff in bass clef. Measure 16 is 4/4, measure 17 is 3/4, measure 18 is 6/4, measure 19 is a whole rest, and measure 20 is 12/8. The music consists of a single note in each measure.

Musical notation for Nocturne Parisien, measures 30-36. Measure 30 is marked with a circled 'E'. The notation is on a single staff in treble clef. Measure 30 is 12/8, measure 31 is 6/8, measure 32 is 12/8, measure 33 is 3/4, measure 34 is 6/8, measure 35 is 12/8, and measure 36 is 3/4. The music consists of a single note in each measure.

Musical notation for Nocturne Parisien, measures 37-42. Measure 37 is marked with a circled 'F'. The notation is on a single staff in bass clef. Measure 37 is 12/8, measure 38 is 6/8, measure 39 is 12/8, measure 40 is 3/4, measure 41 is 6/8, and measure 42 is 12/8. The music consists of a single note in each measure.

Musical notation for Nocturne Parisien, measures 56-60. Measure 56 is marked with a circled 'G' and measure 57 with a circled 'H'. The notation is on a single staff in bass clef. Measure 56 is 12/8, measure 57 is 6/8, measure 58 is 12/8, measure 59 is 3/4, and measure 60 is 12/8. The music consists of a single note in each measure.

meno rit. - - Tempo I. ① crescendo

65 3 5 2 2

Fag. I. *pp*

① Largamente. ① Tempo I.

83 Solo. *f* *f* > Cor. I.II.

94

p *p* *ff*

III. Ariettes oubliées.

Lento. ① ② ③

11 8 7 10

④ L'istesso tempo. poco accel. ⑤ Largamente.

36 4 2 6 3 6

⑥ Quasi Allegretto. rit. ⑦ Quasi Allegretto. rit.

57 8 2 9 3

⑧ Tempo I. allargando in tempo Lento molto.

79 6 2 6 8

IV. Foire.

Quasi Allegretto.

9 8 20

p *mf*

accelerando

Ⓜ ritard.

41 VI. I. *ff*

Tempo I.

non cresc.

46 4 *f*

ⓧ

Ⓨ Tempo di Valse pesante. (*Tung valsetakt*)

55 16 10 3 VI. I. *f* *ff*

Ⓩ

87 4 *f* *ff*

molto rit.

97 2 *ff*

Trombone II.

Verlaine-Suite

I. Introduction.

Lento molto. (♩ = 60)

Ⓐ

Pauline Hall (1929)

Musical notation for the Introduction section, measures 12 and 13. The staff is in 6/8 time. Measure 12 contains a whole note. Measure 13 contains a whole note.

II. Nocturne Parisien.

Lento molto.

Largamente. Ⓑ Tempo I. ♩ = 56

Musical notation for the beginning of Nocturne Parisien, measures 1-4. The staff is in bass clef. Measure 1 is 2/4, measure 2 is 12/4, measure 3 is 6/4, and measure 4 is 3/4.

Musical notation for Nocturne Parisien, measures 16-25. Measure 16 is marked with circled C and contains a 4-measure rest. Measure 17 is marked with circled D and contains a 6-measure rest. Measure 18 is marked VI. I. and contains a 5-measure rest. Measures 19-25 contain a melodic line in treble clef.

Musical notation for Nocturne Parisien, measures 30-36. Measure 30 is marked with circled E and contains a 2-measure rest. Measures 31-36 contain a melodic line in treble clef with dynamics *mf*.

Musical notation for Nocturne Parisien, measures 37-46. Measure 37 is marked rit. and contains an 8-measure rest. Measure 38 is marked Allegretto scherzando. and contains a 6-measure rest. Measure 39 is marked Trba. I. and contains a melodic line in treble clef. Measure 40 is marked with circled G and contains a 2-measure rest. Measures 41-46 contain a melodic line in treble clef with dynamics *mf*.

Musical notation for Nocturne Parisien, measures 58-67. Measure 58 is marked rit. and contains a 2-measure rest. Measure 59 is marked with circled H and a tempo change to a tempo. Measures 60-67 contain a melodic line in treble clef with dynamics *mf* and various tempo markings: molto rit., meno rit., and a final 2-measure rest.

Tempo I. ① crescendo

68

① Largamente. ① Tempo I.

83

94

III. Ariettes oubliées.

Lento. ① ② ③

④ Listesso tempo. poco accel. ⑤ Largamente.

36

⑥ Quasi Allegretto. rit. ⑦ Quasi Allegretto. rit.

57

⑧ Tempo I. allargando in tempo Lento molto.

79

IV. Foire.

Quasi Allegretto.

Ⓧ

9 8

p

Ⓧ

accelerando

VI. I.

21 20

Ⓧ

ritard.

Tempo I.

Ⓧ

Ⓧ

Tempo di Valse pesante. (*Tung valsetakt*)

45 9 16 14

ff

f

Ⓧ

89

f

89 4 2

ff

99

ff

molto rit.

ff

JF

Trombone III.

Verlaine-Suite

I.

Introduction.

Pauline Hall (1929)

Lento molto. (♩ = 60)

3 7 9

p

Ⓐ

Detailed description: This block contains the first nine measures of the Introduction for Trombone III. The music is in bass clef with a 6/8 time signature. It features a series of eighth notes and rests, with measure numbers 3, 7, and 9 indicated above the staff. A dynamic marking of *p* (piano) is shown with a hairpin below the staff. A circled letter 'A' is placed above the staff at the end of the first phrase.

21 Fl. I Clar. I Cor. I

pp

Detailed description: This block contains measures 21 through 29 for Flute I, Clarinet I, and Cor Anglais I. The music is in treble clef with a 6/8 time signature. It features a melodic line with slurs and a dynamic marking of *pp* (pianissimo) at the end. Measure numbers 21, 25, and 29 are indicated above the staff.

II.

Nocturne Parisien.

Lento molto.

Largamente. Ⓑ Tempo I. ♩ = 56

2 2 3 3

Detailed description: This block contains the first eleven measures of Nocturne Parisien for Trombone III. The music is in bass clef with a 9/4 time signature. It features a series of eighth notes and rests, with measure numbers 2, 4, 6, and 8 indicated above the staff.

12 4 4 6 VI. I.

Ⓒ Ⓓ

5

Detailed description: This block contains measures 12 through 28. It is split between Trombone III (bass clef, 9/4 time) and Violin I (treble clef, 9/4 time). Measure numbers 12, 14, 16, and 18 are indicated above the Trombone staff. Circled letters 'C' and 'D' are placed above the staff. A dynamic marking of *mf* (mezzo-forte) is shown below the staff. A circled letter 'E' is placed above the staff at the end of the first phrase.

29 12 6 12 2

mf

Detailed description: This block contains measures 29 through 33. It is split between Trombone III (bass clef, 9/4 time) and Violin I (treble clef, 9/4 time). Measure numbers 29, 31, 32, and 33 are indicated above the Trombone staff. A dynamic marking of *mf* is shown below the staff.

34 8 6

mf

rit. Allegretto scherzando. Ⓕ

Detailed description: This block contains measures 34 through 39. The music is in bass clef with a 9/4 time signature. It features a series of eighth notes and rests, with measure numbers 34, 36, and 38 indicated above the staff. A dynamic marking of *mf* is shown below the staff. The tempo marking 'rit. Allegretto scherzando.' and a circled letter 'F' are placed above the staff.

52 Trba. I. ⓐ rit. - - -

mf

59 ⓑ a tempo molto rit. - - - - - meno rit. - - -

mf

68 ⓒ Tempo I. ⓓ crescendo

pp

82 ⓔ Largamente. ⓕ Tempo I.

f

92 Cor. I.II.

p

III. Ariettes oubliées.

Lento. ⓖ ⓗ ⓙ ⓚ

11 8 7 10

36 ⓛ L'istesso tempo. poco accel. ⓞ Largamente.

4 2 6 3 6

Ⓡ Quasi Allegretto. rit.

Ⓢ Quasi Allegretto. rit.

Ⓣ Tempo I.

allargando

in tempo

Lento molto.

IV. Foire.

Quasi Allegretto.

Ⓤ

Ⓥ

accelerando

Ⓦ ritard.

Tempo I. Ⓧ

Ⓨ Tempo di Valse pesante. (*Tung valsetakt*)

Ⓩ

89

96

molto rit.

Tuba

Verlaine-Suite

I. Introduction.

Lento molto. (♩ = 60)

Pauline Hall (1929)

Musical score for Tuba, Introduction, measures 1-11. The score is in bass clef with a 6/8 time signature. It features a 3-measure rest followed by a 4-measure rest, then a half note, a quarter note, and a half note. Dynamics include *p* and *pp*. A circled 'A' is above measure 12, which is the start of the next section.

II. Nocturne Parisien.

Lento molto.

Largamente. (B) Tempo I. ♩ = 56

Musical score for Tuba, Nocturne Parisien, measures 12-30. The score is in bass clef with a common time signature. It features a 4-measure rest, a 6-measure rest, and a 4-measure rest. Dynamics include *mf*. A circled 'C' is above measure 16, and a circled 'D' is above measure 24. A circled 'E' is above measure 30, which is the start of the next section.

Allegretto scherzando. (F)

38 8 6 Trba. I.

mf

(G) rit. - - (H) a tempo molto rit. - - - - -

56 2 2

mf p

meno rit. - - - - - Tempo I.

65 3

p

crescendo - - - - -

74 (I) 3 2

p *pp* *f*

(K) Largamente.

(L) Tempo I.

83

f > *p* *p*

91 Cor. I.II. 2

p ff

III. Ariettes oubliées.

Lento. (M) (N) (O)

(P) L'istesso tempo. poco accel. (Q) Largamente.

(R) Quasi Allegretto. rit. (S) Quasi Allegretto. rit.

(T) Tempo I. allargando in tempo Lento molto.

IV. Foire.

Quasi Allegretto.

(U) (V)

accelerando

(W) ritard. Tempo I. (X)

Ⓨ Tempo di Valse pesante. (*Tung valsetakt*)

Ⓩ

71 14 VI. I.

f

89

ff

96 molto rit.

ff

JF