

Haydn

I.

Preludio

Moderato e maestoso

5

9

13

17

20

23

26

29

33

35

Tempo primo

Tempo

piu lento

pp

crec.

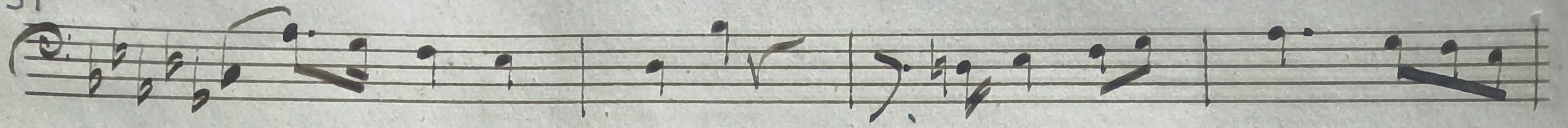
dim.

crec.

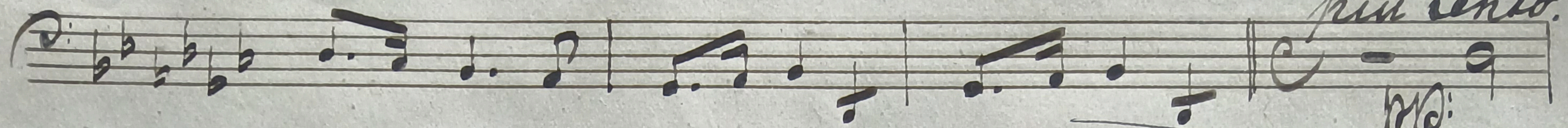
Tempo primo

Tempo

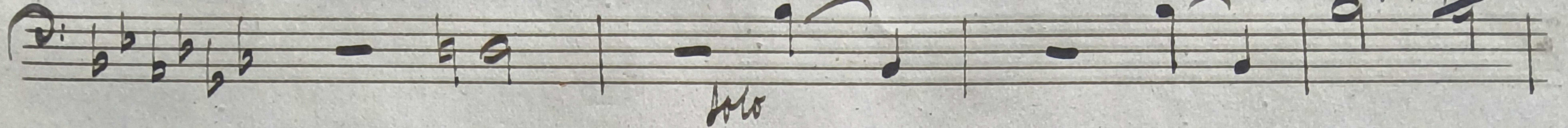
39



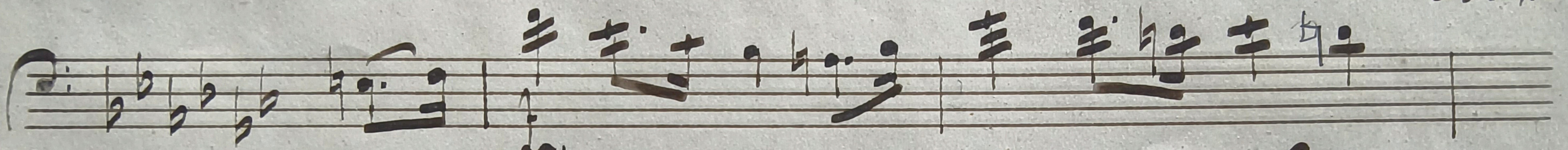
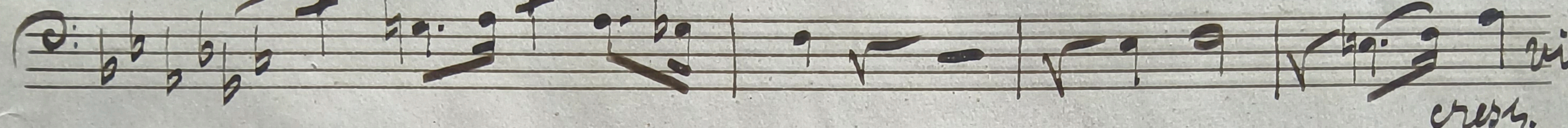
43



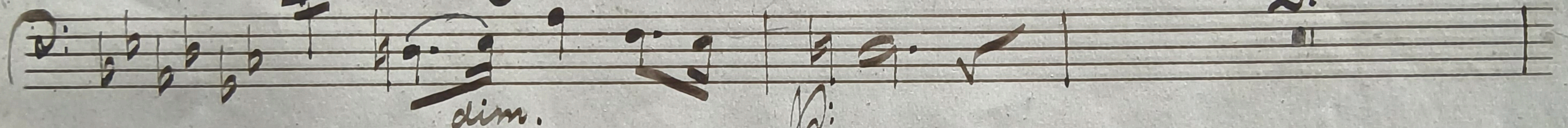
47



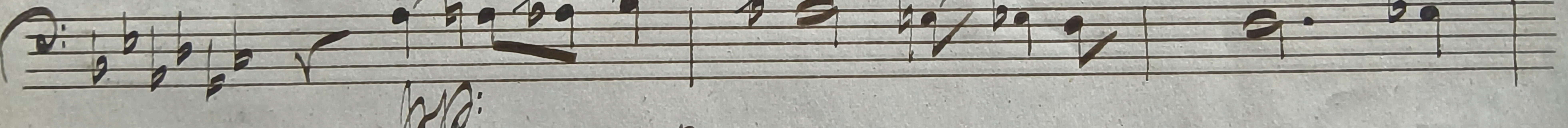
51



57



61



64



Segue attacca

II

Mermetto à l'antique

Fagotto *f^{mo}*

3/4 4.

8

13

crese: - - - - -

18

23

dim:

28

33

38

Trio. 12.

53

molto crese: - - - - -

Solo.

59

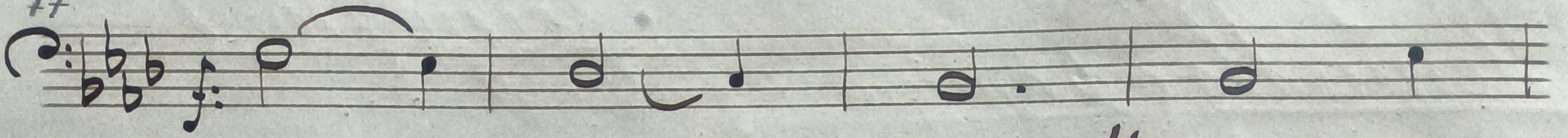
rall:

69

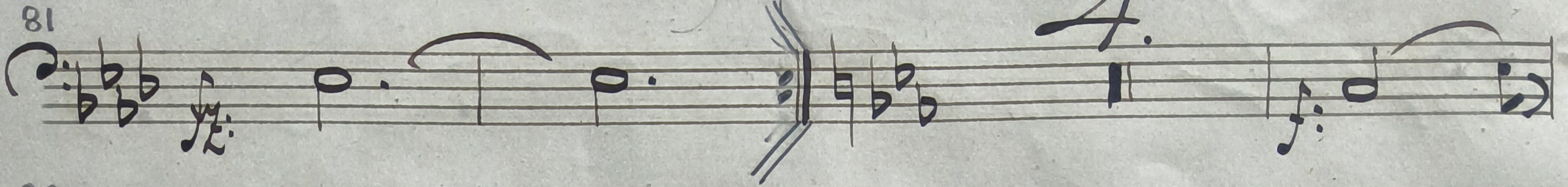
molto rit: *a Tempo.*

5.

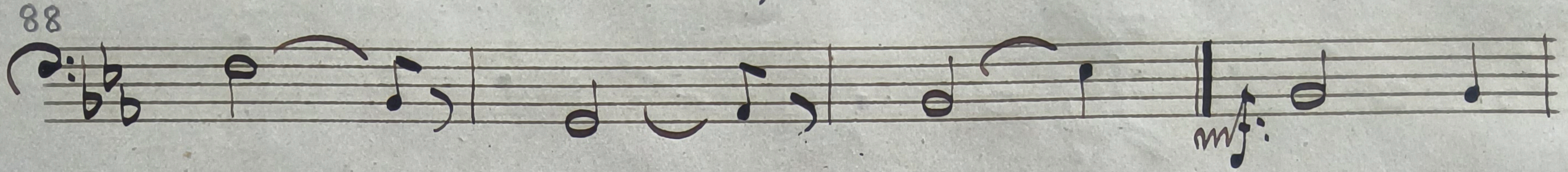
77



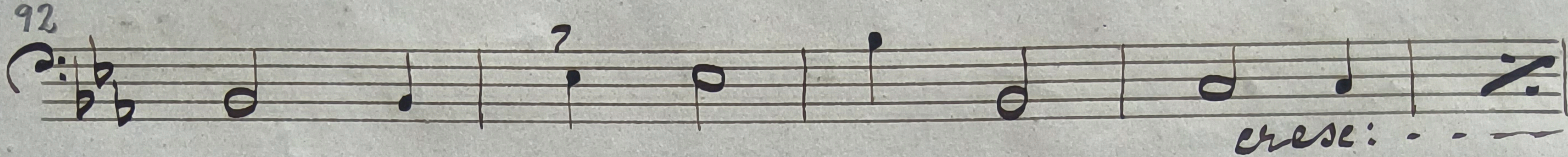
81



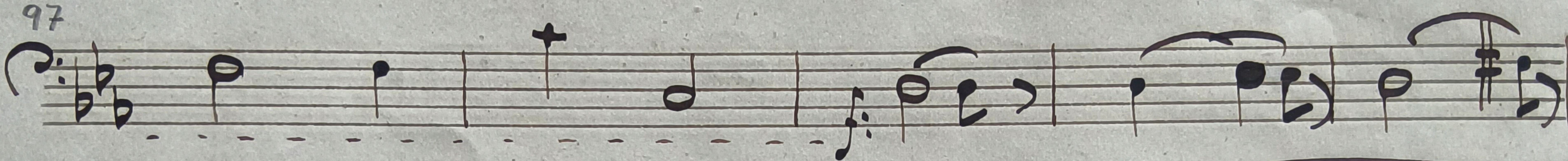
88



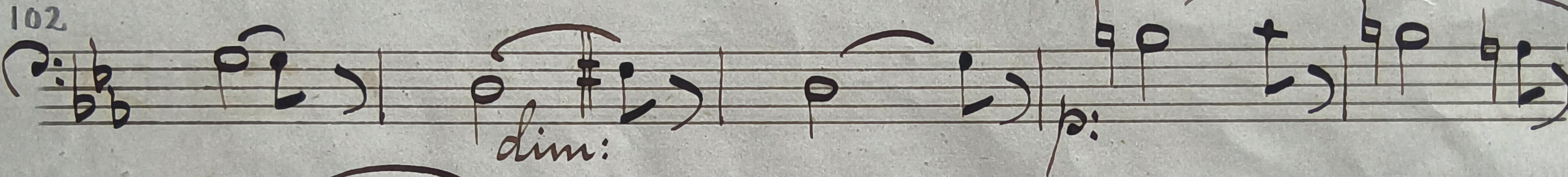
92



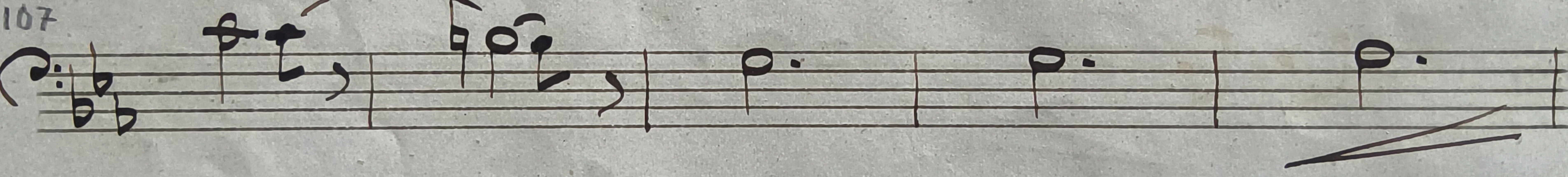
97



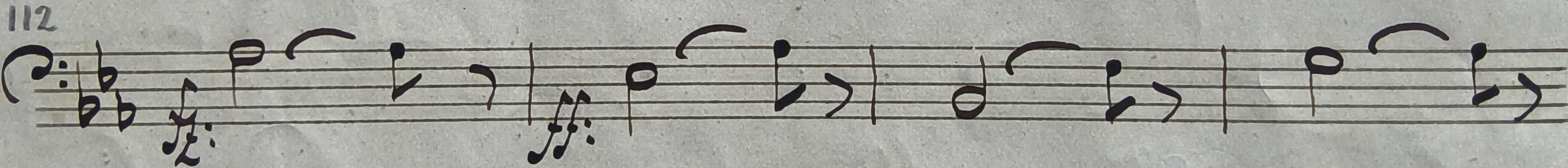
102



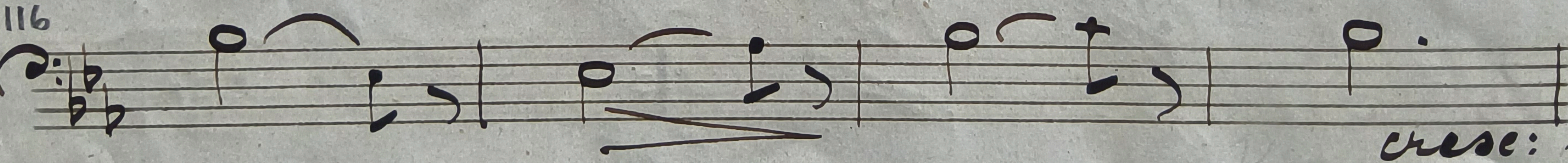
107



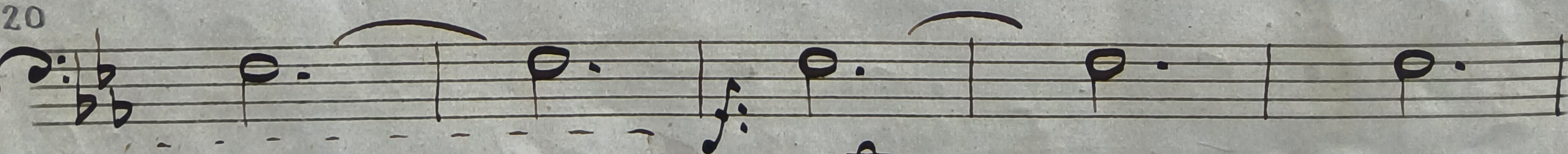
112



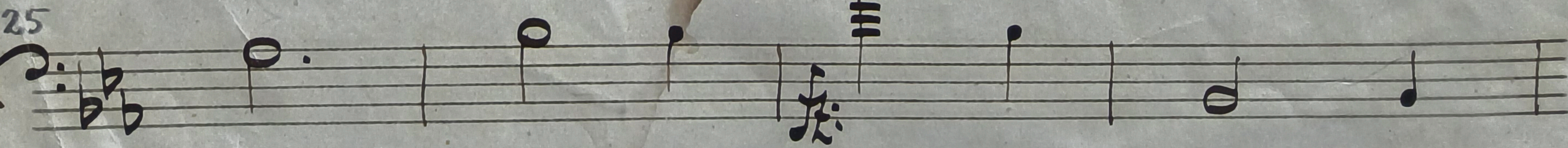
116



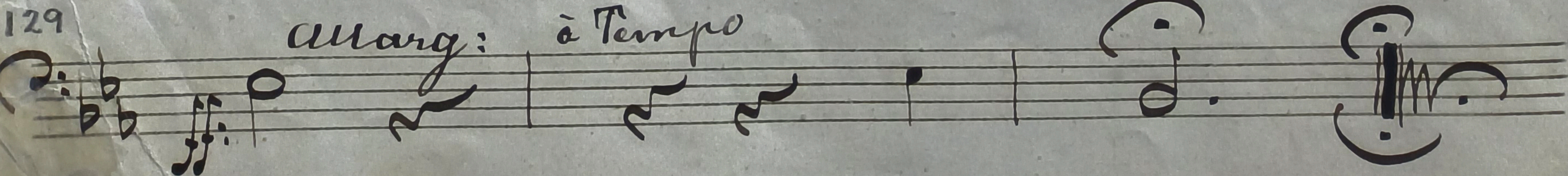
120



125



129



Andante, molto lento e sostenuto.

Handwritten musical score for a single instrument, likely a cello or double bass, in a minor key. The score is written on ten staves, with measure numbers 5, 9, 13, 19, 22, 26, 30, 35, 42, 50, 54, and 58. The tempo is marked *Andante, molto lento e sostenuto*. The score includes various dynamic markings such as *p*, *cresc.*, *mp*, *pp*, *dim.*, and *ppp*. There are also performance instructions like *rit.*, *piu mosso*, and *acceler.*. The notation features complex phrasing with many slurs and ties, and includes some fingerings (e.g., '5' above a note). The paper shows signs of age and wear, with some staining and a tear at the bottom right.

62

rit. Tempo Longo

69

ppp: cresc.

73

mf: Or.

78

mf: Or.

83

dim: ppp:

Allegro ben Moderato. Finale.

mf: Or.

mf: Or.

dim: ppp:

mf: Or.

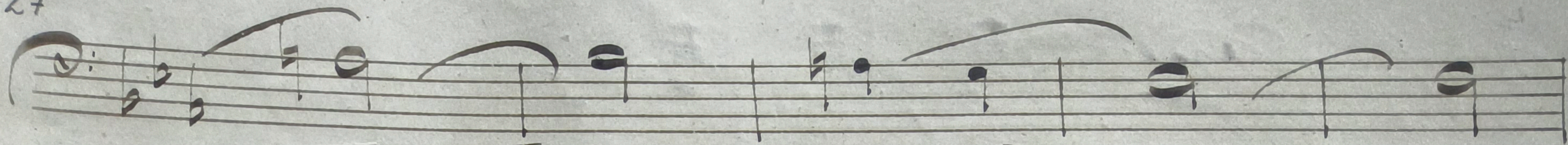
mf: Or.

mf: Or.

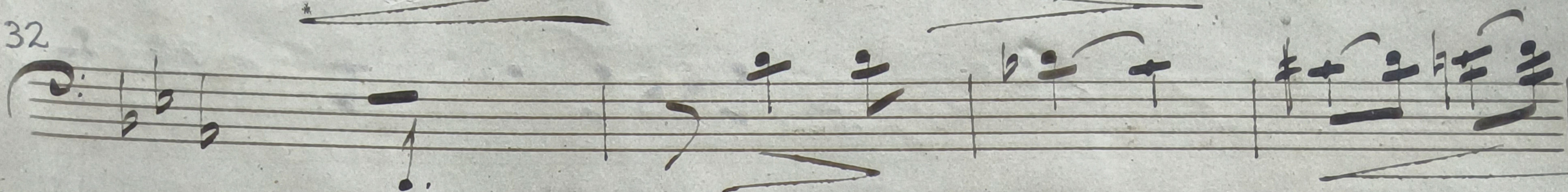
Solo

Fagotto I. m.

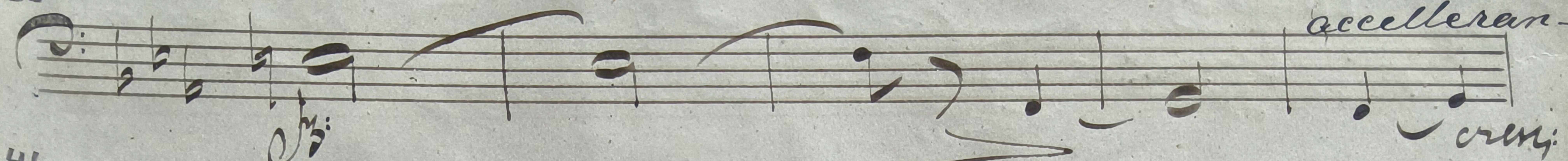
27



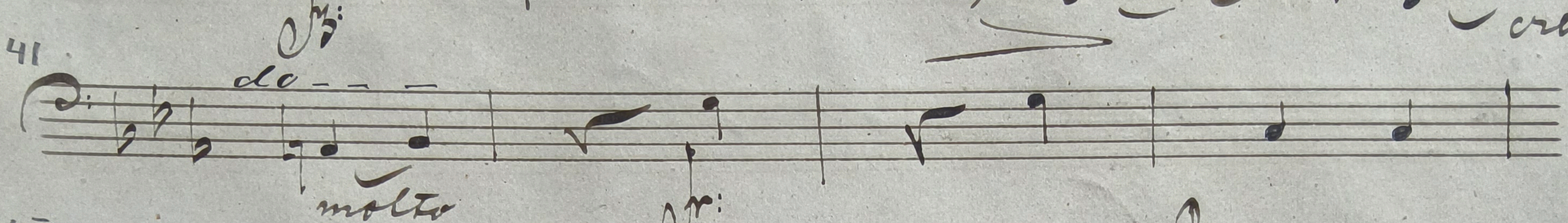
32



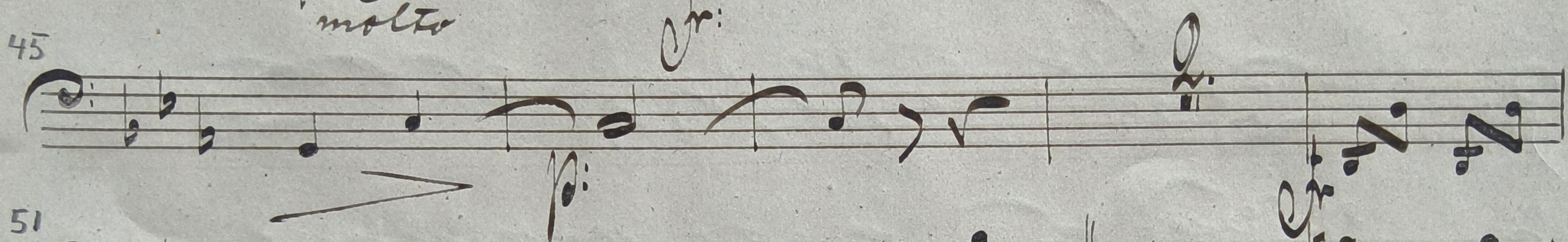
36



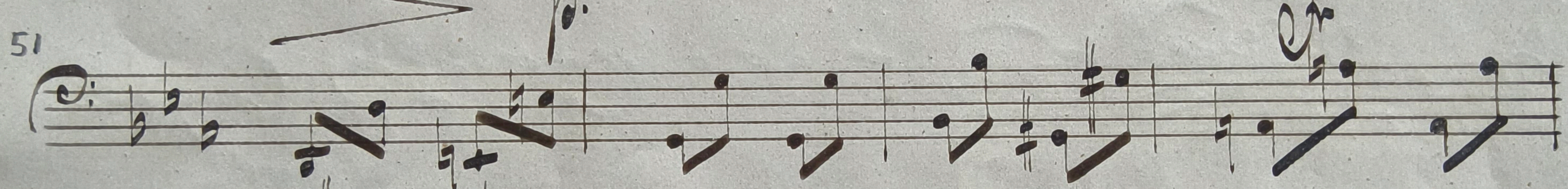
41



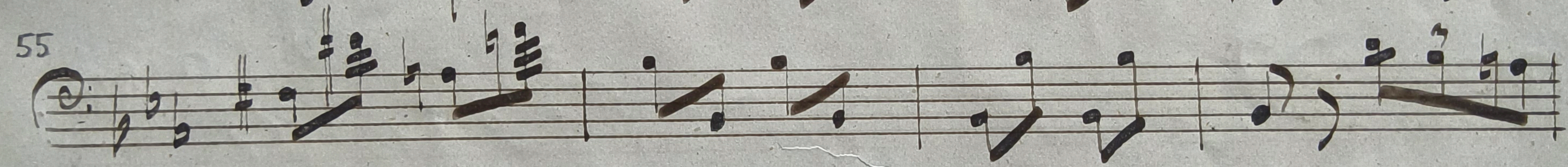
45



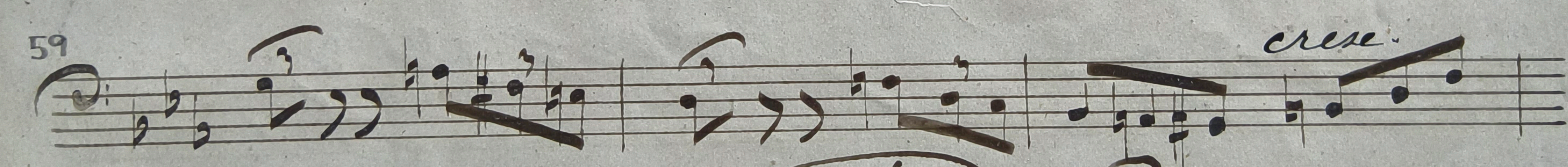
51



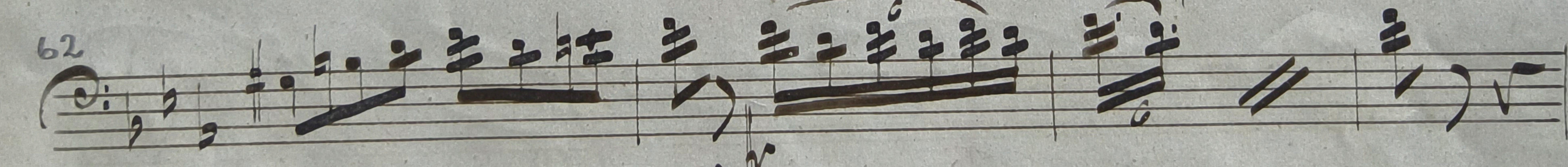
55



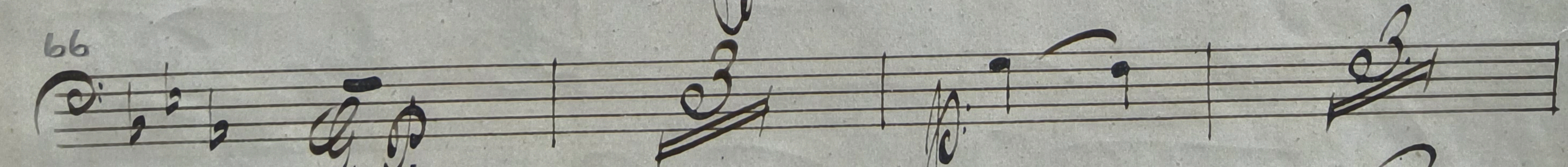
59



62



66



[Handwritten signature]

74 *mf*

78 *cresc. molto*

83 *I Tempo* *ff*

86

92

96

100 *cresc.*

104 *ff*

109 *compressivo*

115 *moll.* *à Tempo*

121 *cresc. molto*

121 *cresc. molto*